

Subject Data
ID: ---
Name:
Date of Birth:21-Sep-1677
Age: 340
Gender: ---

Study & Visit Data
Protocol ID: ---
Site ID: ---
Investigator ID: ---
Visit ID: ---
Date & Time: 06-Jun-2018 15:12:02
Duration: 22:53:25

Machine Data
Device: Savvy 1.0.2 hw=1.23MobECG 1.7.8
Device ID: ---
Software: ---
Manufacturer : ---

Treatment

Referred by:

Analysis Data

Total QRS: 18066	Min	Max	Avr
Analyzed Data: 04:25:51, Noise: 18:25:13 (80.5%)	RR (ms) 609 (20:22:12)	1289 (18:01:44)	887
	HR (bpm) 61 (18:59:48)	82 (16:54:17)	68

Atrial Fibrillation: -

VPB
Total Number: 0 (0.00%)
Isolated V: 0
Ventricular Couplets: 0
Ventricular Run: 0
V Bigeminy: 0
V Trigeminy: 0
Ventricular Tachycardia: 0

SVPB
Total Number: 14 (0.08%)
Isolated S: 10
Supraventricular Couplets: 2
Supraventricular Run: 0
SV Bigeminy: 0
SV Trigeminy: 0
Supraventricular Tachycardia: 0

Bradycardia: 0
Pauses: 0

HRV
PNN50: 0.29 %
SDNN: 51.69 ms
RMSSD: 15.48 ms

Analysis Settings

Analysis Software: CER-S v4.1.0SPRINT1_BETA2 - Beat Detection (ABILE-Pancrazio v1.5.0) - Rhythm Analysis (ABILE-Pancrazio v1.5.0)

BEAT DETECTION

- Leads used for detection: Unknown1

- Noise sensitivity level: High

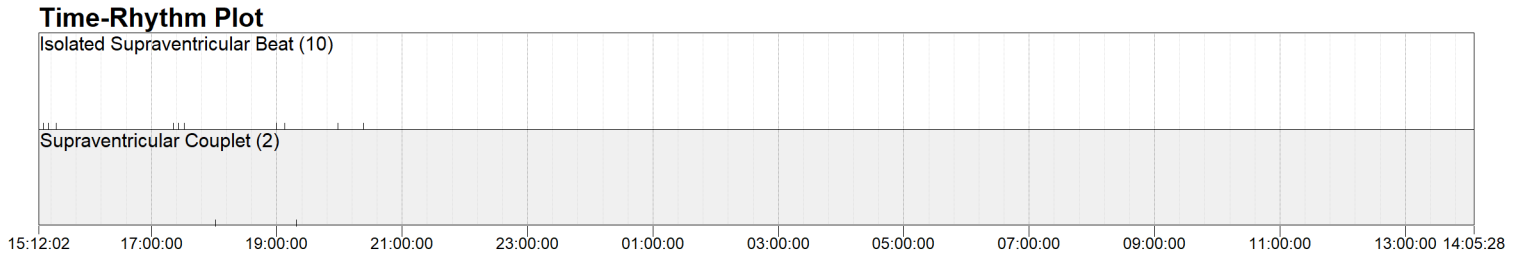
RHYTHM ANALYSIS

- Prematurity index: 75%
- Prolonged RR Interval Threshold: 150%
- Bradycardia Threshold: 45 bpm, Min. Len.: 10.0 s
- Vent. Tachycardia Thresh.: 150 bpm, Min. Len.: 5.0 s

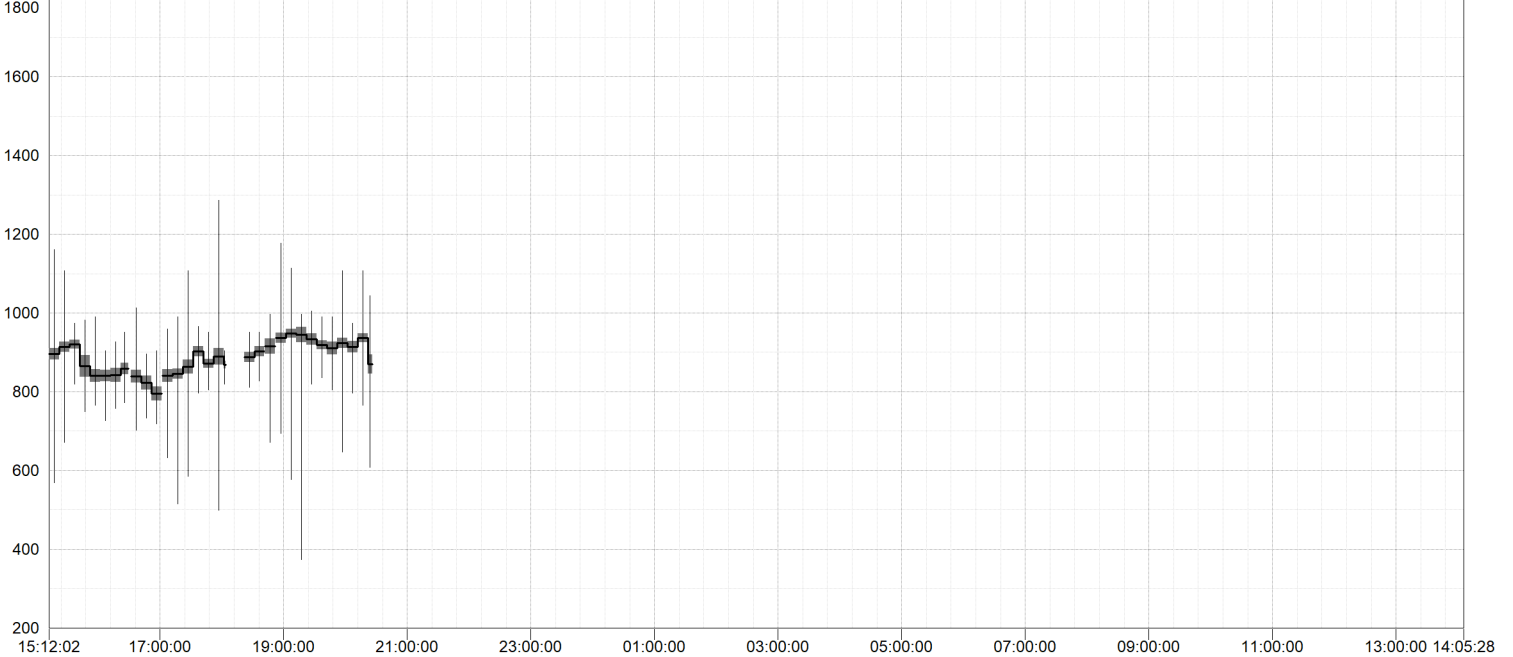
- Average RR Window size: 8
- Pause Threshold: 2.5 s
- Supravent. Tachycardia Thresh.: 150 bpm, Min. Len.: 5.0 s

Review

Date of Analysis _____Reviewer: _____



RR Average with extrema and Standard Deviation. (RR window = 10 minute(s))



Beats and Rhythm Table - Part 1 of 3

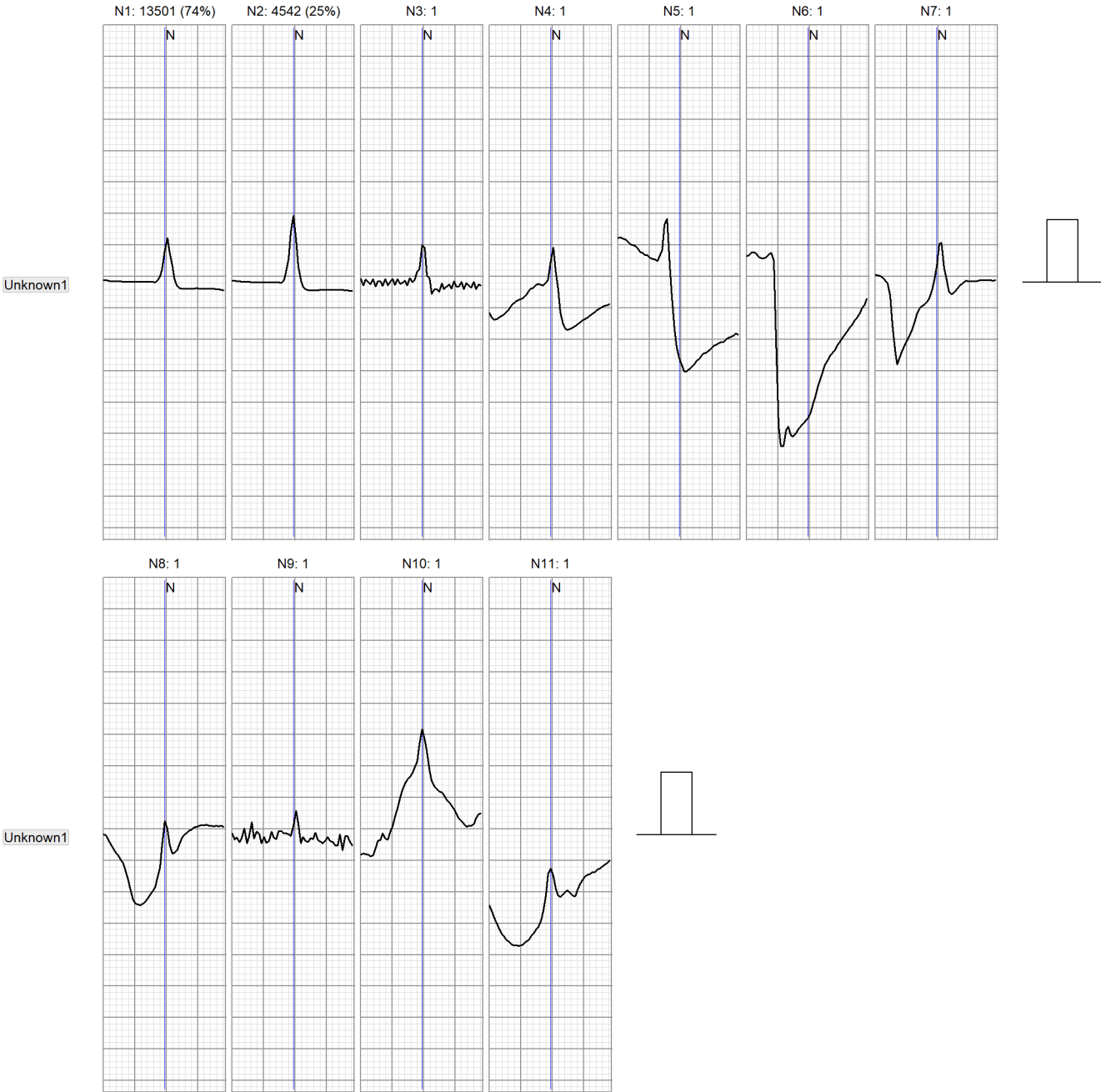
Time	Analyzed Time	RR Min	RR Max	RR Average	RR StDev	HR Min	HR Max	HR Average	HR StDev	Brady	Pauses	Prolonged RR Intervals	SVPB Isolated	SV Couplet	SV Run	SV Bg	SV Tg
15:12:02 - 15:59:59	00:47:29 (99.0%)	695	1164	891	56.31	62	78	68	9.10	-	-	-	3	-	-	-	-
16:00:00 - 16:59:59	00:50:08 (83.6%)	703	1016	833	43.32	66	82	72	5.34	-	-	-	-	-	-	-	-
17:00:00 - 17:59:59	00:56:40 (94.5%)	633	1109	867	50.89	62	80	69	7.81	-	-	-	3	-	-	-	-
18:00:00 - 18:59:59	00:32:23 (54.0%)	672	1289	909	49.29	61	74	66	5.29	-	-	-	1	1	-	-	-
19:00:00 - 19:59:59	00:54:15 (90.4%)	805	1117	931	41.43	61	72	64	7.81	-	-	-	2	1	-	-	-
20:00:00 - 20:59:59	00:24:53 (41.5%)	609	1109	921	43.30	62	78	65	4.88	-	-	-	1	-	-	-	-
21:00:00 - 21:59:59	00:00:00 (0%)	-	-	-	-	-	-	-	-	-	-	-	-	-	-	-	-
22:00:00 - 22:59:59	00:00:00 (0%)	-	-	-	-	-	-	-	-	-	-	-	-	-	-	-	-
23:00:00 - 23:59:59	00:00:00 (0%)	-	-	-	-	-	-	-	-	-	-	-	-	-	-	-	-
00:00:00 - 00:59:59	00:00:00 (0%)	-	-	-	-	-	-	-	-	-	-	-	-	-	-	-	-
01:00:00 - 01:59:59	00:00:00 (0%)	-	-	-	-	-	-	-	-	-	-	-	-	-	-	-	-
02:00:00 - 02:59:59	00:00:00 (0%)	-	-	-	-	-	-	-	-	-	-	-	-	-	-	-	-
03:00:00 - 03:59:59	00:00:00 (0%)	-	-	-	-	-	-	-	-	-	-	-	-	-	-	-	-
04:00:00 - 04:59:59	00:00:00 (0%)	-	-	-	-	-	-	-	-	-	-	-	-	-	-	-	-
05:00:00 - 05:59:59	00:00:00 (0%)	-	-	-	-	-	-	-	-	-	-	-	-	-	-	-	-
06:00:00 - 06:59:59	00:00:00 (0%)	-	-	-	-	-	-	-	-	-	-	-	-	-	-	-	-
07:00:00 - 07:59:59	00:00:00 (0%)	-	-	-	-	-	-	-	-	-	-	-	-	-	-	-	-
08:00:00 - 08:59:59	00:00:00 (0%)	-	-	-	-	-	-	-	-	-	-	-	-	-	-	-	-
09:00:00 - 09:59:59	00:00:00 (0%)	-	-	-	-	-	-	-	-	-	-	-	-	-	-	-	-
10:00:00 - 10:59:59	00:00:00 (0%)	-	-	-	-	-	-	-	-	-	-	-	-	-	-	-	-
11:00:00 - 11:59:59	00:00:00 (0%)	-	-	-	-	-	-	-	-	-	-	-	-	-	-	-	-
12:00:00 - 12:59:59	00:00:00 (0%)	-	-	-	-	-	-	-	-	-	-	-	-	-	-	-	-
13:00:00 - 13:59:59	00:00:00 (0%)	-	-	-	-	-	-	-	-	-	-	-	-	-	-	-	-
14:00:00 - 14:05:27	00:00:00 (0%)	-	-	-	-	-	-	-	-	-	-	-	-	-	-	-	-
All Days: 08:00:00 - 20:00:00	00:00:00 (0%)	633	1289	883	56.01	61	82	68	6.06	-	-	-	9	2	-	-	-
All Nights: 23:00:00 - 06:00:00	00:00:00 (0%)	-	-	-	-	-	-	-	-	-	-	-	-	-	-	-	-
Entire Recording	04:25:51 (19.4%)	609	1289	887	62.42	61	82	68	11.61	-	-	-	10	2	-	-	-

Beats and Rhythm Table - Part 2 of 3

Time	Analyzed Time	SV Tachy	ATachy	AFib	AFlutter	V Isolated	V Couplet	V Run	V Bg	V Tg	V Tachy	VFib	VFlutter	Torsade de Pointes	AVB	N Beats	V Beats
15:12:02 - 15:59:59	00:47:29 (99.0%)	-	-	-	-	-	-	-	-	-	-	-	-	-	-	3201	-
16:00:00 - 16:59:59	00:50:08 (83.6%)	-	-	-	-	-	-	-	-	-	-	-	-	-	-	3622	-
17:00:00 - 17:59:59	00:56:40 (94.5%)	-	-	-	-	-	-	-	-	-	-	-	-	-	-	3938	-
18:00:00 - 18:59:59	00:32:23 (54.0%)	-	-	-	-	-	-	-	-	-	-	-	-	-	-	2157	-
19:00:00 - 19:59:59	00:54:15 (90.4%)	-	-	-	-	-	-	-	-	-	-	-	-	-	-	3505	-
20:00:00 - 20:59:59	00:24:53 (41.5%)	-	-	-	-	-	-	-	-	-	-	-	-	-	-	1629	-
21:00:00 - 21:59:59	00:00:00 (0%)	-	-	-	-	-	-	-	-	-	-	-	-	-	-	-	-
22:00:00 - 22:59:59	00:00:00 (0%)	-	-	-	-	-	-	-	-	-	-	-	-	-	-	-	-
23:00:00 - 23:59:59	00:00:00 (0%)	-	-	-	-	-	-	-	-	-	-	-	-	-	-	-	-
00:00:00 - 00:59:59	00:00:00 (0%)	-	-	-	-	-	-	-	-	-	-	-	-	-	-	-	-
01:00:00 - 01:59:59	00:00:00 (0%)	-	-	-	-	-	-	-	-	-	-	-	-	-	-	-	-
02:00:00 - 02:59:59	00:00:00 (0%)	-	-	-	-	-	-	-	-	-	-	-	-	-	-	-	-
03:00:00 - 03:59:59	00:00:00 (0%)	-	-	-	-	-	-	-	-	-	-	-	-	-	-	-	-
04:00:00 - 04:59:59	00:00:00 (0%)	-	-	-	-	-	-	-	-	-	-	-	-	-	-	-	-
05:00:00 - 05:59:59	00:00:00 (0%)	-	-	-	-	-	-	-	-	-	-	-	-	-	-	-	-
06:00:00 - 06:59:59	00:00:00 (0%)	-	-	-	-	-	-	-	-	-	-	-	-	-	-	-	-
07:00:00 - 07:59:59	00:00:00 (0%)	-	-	-	-	-	-	-	-	-	-	-	-	-	-	-	-
08:00:00 - 08:59:59	00:00:00 (0%)	-	-	-	-	-	-	-	-	-	-	-	-	-	-	-	-
09:00:00 - 09:59:59	00:00:00 (0%)	-	-	-	-	-	-	-	-	-	-	-	-	-	-	-	-
10:00:00 - 10:59:59	00:00:00 (0%)	-	-	-	-	-	-	-	-	-	-	-	-	-	-	-	-
11:00:00 - 11:59:59	00:00:00 (0%)	-	-	-	-	-	-	-	-	-	-	-	-	-	-	-	-
12:00:00 - 12:59:59	00:00:00 (0%)	-	-	-	-	-	-	-	-	-	-	-	-	-	-	-	-
13:00:00 - 13:59:59	00:00:00 (0%)	-	-	-	-	-	-	-	-	-	-	-	-	-	-	-	-
14:00:00 - 14:05:27	00:00:00 (0%)	-	-	-	-	-	-	-	-	-	-	-	-	-	-	-	-
All Days: 08:00:00 - 20:00:00	00:00:00 (0%)	-	-	-	-	-	-	-	-	-	-	-	-	-	-	16423	-
All Nights: 23:00:00 - 06:00:00	00:00:00 (0%)	-	-	-	-	-	-	-	-	-	-	-	-	-	-	-	-
Entire Recording	04:25:51 (19.4%)	-	-	-	-	-	-	-	-	-	-	-	-	-	-	18052	-

Beats and Rhythm Table - Part 3 of 3

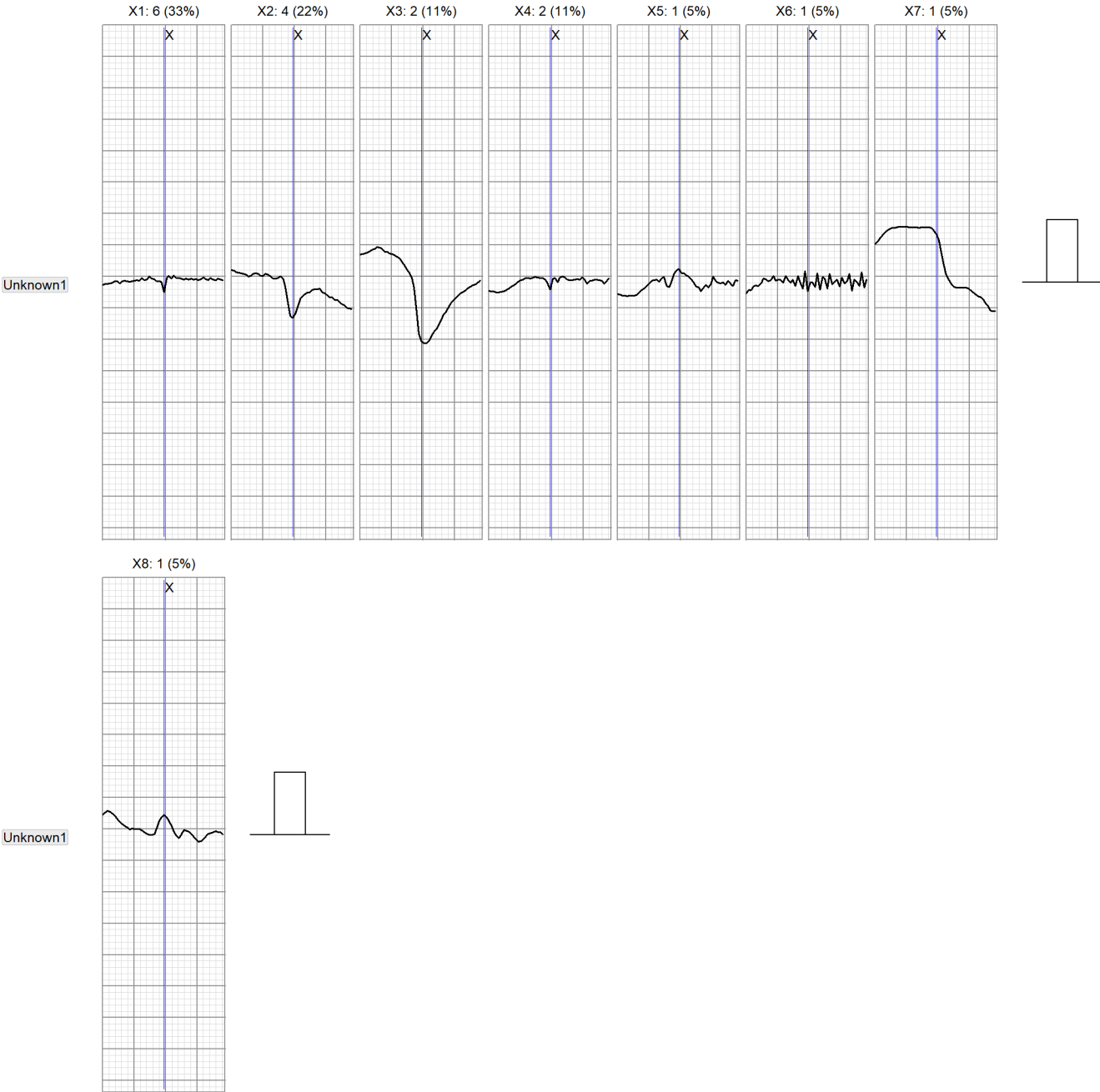
Time	Analyzed Time	S Beats
15:12:02 - 15:59:59	00:47:29 (99.0%)	3
16:00:00 - 16:59:59	00:50:08 (83.6%)	-
17:00:00 - 17:59:59	00:56:40 (94.5%)	3
18:00:00 - 18:59:59	00:32:23 (54.0%)	3
19:00:00 - 19:59:59	00:54:15 (90.4%)	4
20:00:00 - 20:59:59	00:24:53 (41.5%)	1
21:00:00 - 21:59:59	00:00:00 (0%)	-
22:00:00 - 22:59:59	00:00:00 (0%)	-
23:00:00 - 23:59:59	00:00:00 (0%)	-
00:00:00 - 00:59:59	00:00:00 (0%)	-
01:00:00 - 01:59:59	00:00:00 (0%)	-
02:00:00 - 02:59:59	00:00:00 (0%)	-
03:00:00 - 03:59:59	00:00:00 (0%)	-
04:00:00 - 04:59:59	00:00:00 (0%)	-
05:00:00 - 05:59:59	00:00:00 (0%)	-
06:00:00 - 06:59:59	00:00:00 (0%)	-
07:00:00 - 07:59:59	00:00:00 (0%)	-
08:00:00 - 08:59:59	00:00:00 (0%)	-
09:00:00 - 09:59:59	00:00:00 (0%)	-
10:00:00 - 10:59:59	00:00:00 (0%)	-
11:00:00 - 11:59:59	00:00:00 (0%)	-
12:00:00 - 12:59:59	00:00:00 (0%)	-
13:00:00 - 13:59:59	00:00:00 (0%)	-
14:00:00 - 14:05:27	00:00:00 (0%)	-
All Days: 08:00:00 - 20:00:00	00:00:00 (0%)	13
All Nights: 23:00:00 - 06:00:00	00:00:00 (0%)	-
Entire Recording	04:25:51 (19.4%)	14

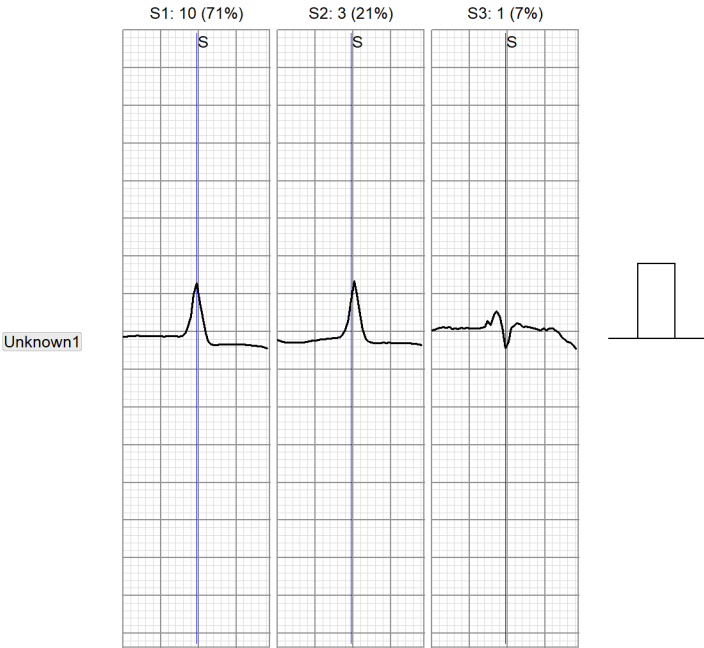


18 Beats in 8 Templates [page 1 of 1]

Templates X

50 mm/s 10 mm/mV

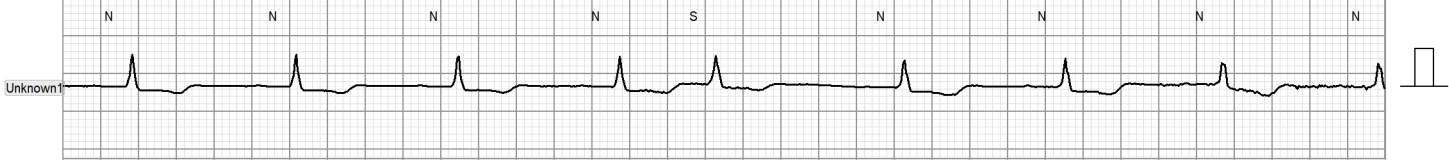




Automatic Strips

Isolated Supraventricular Beat (Shortest): starting at 06-Jun-2018 17:20:56 (7 sec)

25 mm/s 5 mm/mV



Supraventricular Couplet (Shortest): starting at 06-Jun-2018 19:18:42 (7 sec)

25 mm/s 5 mm/mV

