

Subject Data
ID: ---
Name:
Date of Birth:21-Sep-1677
Age: 340
Gender: ---

Study & Visit Data
Protocol ID: ---
Site ID: ---
Investigator ID: ---
Visit ID: ---
Date & Time: 07-May-2018 18:34:08
Duration: 14:39:23

Machine Data
Device: Savvy 1.0.2 hw=1.23MobECG 1.7.8
Device ID: ---
Software: ---
Manufacturer : ---

Treatment

Referred by:

Analysis Data

Total QRS: 1684	Min	Max	Avr
Analyzed Data: 00:27:50, Noise: 15:04:04 (102.8%)	RR (ms) 766 (18:47:34)	1242 (19:00:08)	994
Atrial Fibrillation: -	HR (bpm) 57 (18:48:14)	66 (18:47:34)	60
VPB Total Number: 1 (0.06%) Isolated V: 1 Ventricular Couplets: 0 Ventricular Run: 0 V Bigeminy: 0 V Trigeminy: 0 Ventricular Tachycardia: 0	SVPB Total Number: 1 (0.06%) Isolated S: 1 Supraventricular Couplets: 0 Supraventricular Run: 0 SV Bigeminy: 0 SV Trigeminy: 0 Supraventricular Tachycardia: 0		
Bradycardia: 0 Pauses: 0			
HRV PNN50: 1.07 % SDNN: 26.69 ms RMSSD: 22.88 ms			

Analysis Settings

Analysis Software: CER-S v4.1.0SPRINT1_BETA2 - Beat Detection (ABILE-Pancrazio v1.5.0) - Rhythm Analysis (ABILE-Pancrazio v1.5.0)

BEAT DETECTION

- Leads used for detection: Unknown1

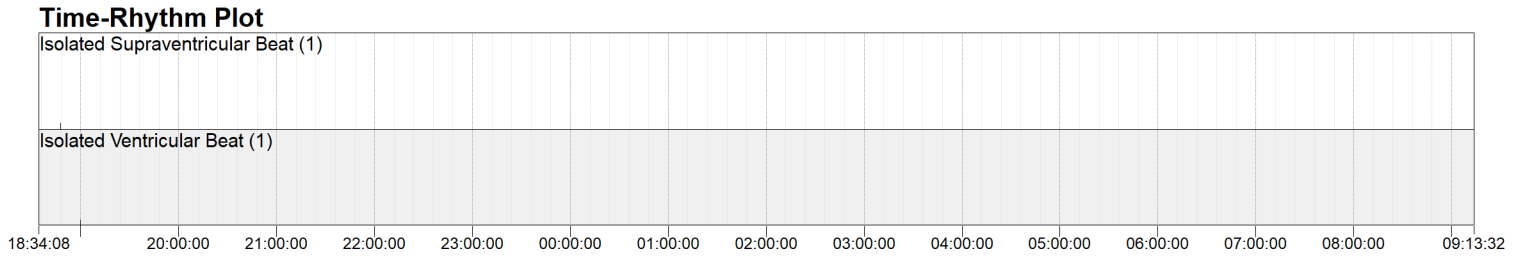
RHYTHM ANALYSIS

- Prematurity index: 75%
- Prolonged RR Interval Threshold: 200%
- Bradycardia Threshold: 45 bpm, Min. Len.: 10.0 s
- Vent. Tachycardia Thresh.: 150 bpm, Min. Len.: 5.0 s

- Noise sensitivity level: High
- Average RR Window size: 8
- Pause Threshold: 2.5 s
- Supravent. Tachycardia Thresh.: 150 bpm, Min. Len.: 5.0 s

Review

Date of Analysis _____ Reviewer: _____



RR Average with extrema and Standard Deviation. (RR window = 10 minute(s))



Beats and Rhythm Table - Part 1 of 3

Time	Analyzed Time	RR Min	RR Max	RR Average	RR StDev	HR Min	HR Max	HR Average	HR StDev	Brady	Pauses	Prolonged RR Intervals	SVPB Isolated	SV Couplet	SV Run	SV Bg	SV Tg
18:34:08 - 18:59:59	00:25:51 (100.0%)	766	1055	994	33.50	57	66	60	6.82	-	-	-	1	-	-	-	-
19:00:00 - 19:59:59	00:01:58 (3.3%)	820	1242	983	65.82	57	65	61	6.06	-	-	-	-	-	-	-	-
20:00:00 - 20:59:59	00:00:00 (0%)	-	-	-	-	-	-	-	-	-	-	-	-	-	-	-	-
21:00:00 - 21:59:59	00:00:00 (0%)	-	-	-	-	-	-	-	-	-	-	-	-	-	-	-	-
22:00:00 - 22:59:59	00:00:00 (0%)	-	-	-	-	-	-	-	-	-	-	-	-	-	-	-	-
23:00:00 - 23:59:59	00:00:00 (0%)	-	-	-	-	-	-	-	-	-	-	-	-	-	-	-	-
00:00:00 - 00:59:59	00:00:00 (0%)	-	-	-	-	-	-	-	-	-	-	-	-	-	-	-	-
01:00:00 - 01:59:59	00:00:00 (0%)	-	-	-	-	-	-	-	-	-	-	-	-	-	-	-	-
02:00:00 - 02:59:59	00:00:00 (0%)	-	-	-	-	-	-	-	-	-	-	-	-	-	-	-	-
03:00:00 - 03:59:59	00:00:00 (0%)	-	-	-	-	-	-	-	-	-	-	-	-	-	-	-	-
04:00:00 - 04:59:59	00:00:00 (0%)	-	-	-	-	-	-	-	-	-	-	-	-	-	-	-	-
05:00:00 - 05:59:59	00:00:00 (0%)	-	-	-	-	-	-	-	-	-	-	-	-	-	-	-	-
06:00:00 - 06:59:59	00:00:00 (0%)	-	-	-	-	-	-	-	-	-	-	-	-	-	-	-	-
07:00:00 - 07:59:59	00:00:00 (0%)	-	-	-	-	-	-	-	-	-	-	-	-	-	-	-	-
08:00:00 - 08:59:59	00:00:00 (0%)	-	-	-	-	-	-	-	-	-	-	-	-	-	-	-	-
09:00:00 - 09:13:31	00:00:00 (0%)	-	-	-	-	-	-	-	-	-	-	-	-	-	-	-	-
All Days: 08:00:00 - 20:00:00	00:00:00 (0%)	766	1242	994	42.08	57	66	60	7.37	-	-	-	1	-	-	-	-
All Nights: 23:00:00 - 06:00:00	00:00:00 (0%)	-	-	-	-	-	-	-	-	-	-	-	-	-	-	-	-
Entire Recording	00:27:50 (3.2%)	766	1242	994	42.08	57	66	60	7.37	-	-	-	1	-	-	-	-

Beats and Rhythm Table - Part 2 of 3

Time	Analyzed Time	SV Tachy	ATachy	AFib	AFlutter	V Isolated	V Couplet	V Run	V Bg	V Tg	V Tachy	VFib	VFlutter	Torsade de Pointes	AVB	N Beats	V Beats
18:34:08 - 18:59:59	00:25:51 (100.0%)	-	-	-	-	1	-	-	-	-	-	-	-	-	-	1560	1
19:00:00 - 19:59:59	00:01:58 (3.3%)	-	-	-	-	-	-	-	-	-	-	-	-	-	-	122	-
20:00:00 - 20:59:59	00:00:00 (0%)	-	-	-	-	-	-	-	-	-	-	-	-	-	-	-	-
21:00:00 - 21:59:59	00:00:00 (0%)	-	-	-	-	-	-	-	-	-	-	-	-	-	-	-	-
22:00:00 - 22:59:59	00:00:00 (0%)	-	-	-	-	-	-	-	-	-	-	-	-	-	-	-	-
23:00:00 - 23:59:59	00:00:00 (0%)	-	-	-	-	-	-	-	-	-	-	-	-	-	-	-	-
00:00:00 - 00:59:59	00:00:00 (0%)	-	-	-	-	-	-	-	-	-	-	-	-	-	-	-	-
01:00:00 - 01:59:59	00:00:00 (0%)	-	-	-	-	-	-	-	-	-	-	-	-	-	-	-	-
02:00:00 - 02:59:59	00:00:00 (0%)	-	-	-	-	-	-	-	-	-	-	-	-	-	-	-	-
03:00:00 - 03:59:59	00:00:00 (0%)	-	-	-	-	-	-	-	-	-	-	-	-	-	-	-	-
04:00:00 - 04:59:59	00:00:00 (0%)	-	-	-	-	-	-	-	-	-	-	-	-	-	-	-	-
05:00:00 - 05:59:59	00:00:00 (0%)	-	-	-	-	-	-	-	-	-	-	-	-	-	-	-	-
06:00:00 - 06:59:59	00:00:00 (0%)	-	-	-	-	-	-	-	-	-	-	-	-	-	-	-	-
07:00:00 - 07:59:59	00:00:00 (0%)	-	-	-	-	-	-	-	-	-	-	-	-	-	-	-	-
08:00:00 - 08:59:59	00:00:00 (0%)	-	-	-	-	-	-	-	-	-	-	-	-	-	-	-	-
09:00:00 - 09:13:31	00:00:00 (0%)	-	-	-	-	-	-	-	-	-	-	-	-	-	-	-	-
All Days: 08:00:00 - 20:00:00	00:00:00 (0%)	-	-	-	-	1	-	-	-	-	-	-	-	-	-	1682	1
All Nights: 23:00:00 - 06:00:00	00:00:00 (0%)	-	-	-	-	-	-	-	-	-	-	-	-	-	-	-	-
Entire Recording	00:27:50 (3.2%)	-	-	-	-	1	-	-	-	-	-	-	-	-	-	1682	1

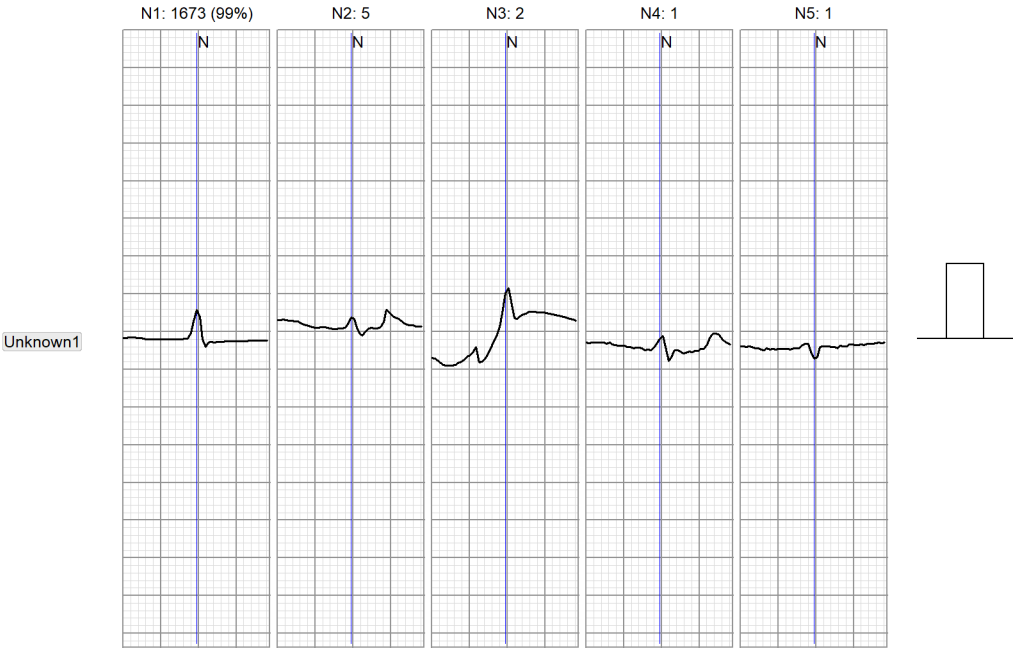
Beats and Rhythm Table - Part 3 of 3

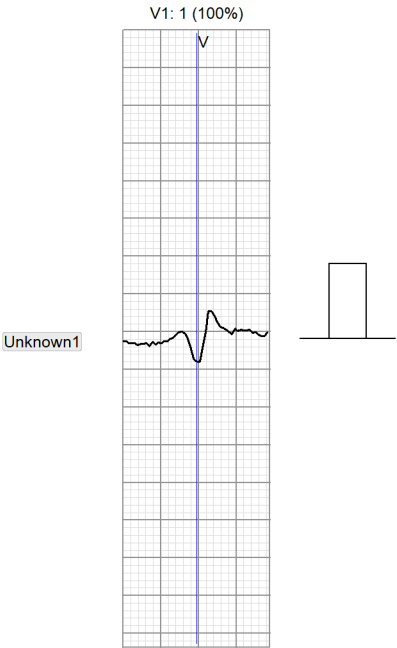
Time	Analyzed Time	S Beats
18:34:08 - 18:59:59	00:25:51 (100.0%)	1
19:00:00 - 19:59:59	00:01:58 (3.3%)	-
20:00:00 - 20:59:59	00:00:00 (0%)	-
21:00:00 - 21:59:59	00:00:00 (0%)	-
22:00:00 - 22:59:59	00:00:00 (0%)	-
23:00:00 - 23:59:59	00:00:00 (0%)	-
00:00:00 - 00:59:59	00:00:00 (0%)	-
01:00:00 - 01:59:59	00:00:00 (0%)	-
02:00:00 - 02:59:59	00:00:00 (0%)	-
03:00:00 - 03:59:59	00:00:00 (0%)	-
04:00:00 - 04:59:59	00:00:00 (0%)	-
05:00:00 - 05:59:59	00:00:00 (0%)	-
06:00:00 - 06:59:59	00:00:00 (0%)	-
07:00:00 - 07:59:59	00:00:00 (0%)	-
08:00:00 - 08:59:59	00:00:00 (0%)	-
09:00:00 - 09:13:31	00:00:00 (0%)	-
All Days: 08:00:00 - 20:00:00	00:00:00 (0%)	1
All Nights: 23:00:00 - 06:00:00	00:00:00 (0%)	-
Entire Recording	00:27:50 (3.2%)	1

1682 Beats in 5 Templates [page 1 of 1]

Templates N

50 mm/s 10 mm/mV





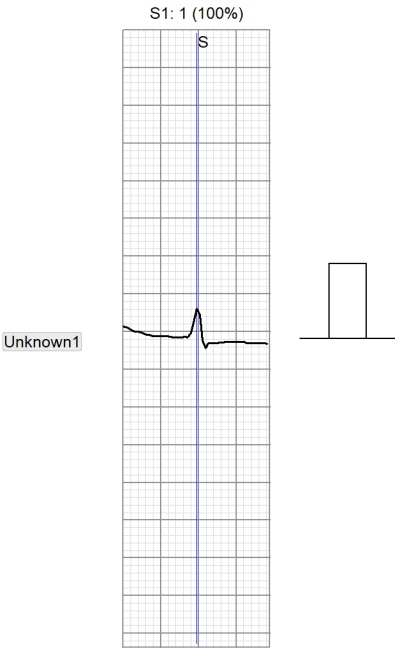
6 Beats in 5 Templates [page 1 of 1]

Templates X

50 mm/s 10 mm/mV

Unknown1



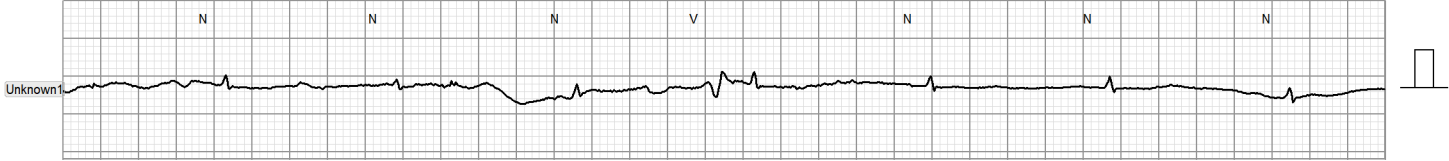


Automatic Strips

Isolated Supraventricular Beat (Shortest): starting at 07-May-2018 18:47:31 (7 sec) 25 mm/s 5 mm/mV



Isolated Ventricular Beat (Shortest): starting at 07-May-2018 18:59:49 (7 sec) 25 mm/s 5 mm/mV



Ventricular Beat of template V1: starting at 07-May-2018 18:59:49 (7 sec) 25 mm/s 5 mm/mV

