

Continuous ECG Report

Subject Data

ID: ---
Name:
Date of Birth: 21-Sep-1677
Age: 339
Gender: ---

Study & Visit Data

Protocol ID: ---
Site ID: ---
Investigator ID: ---
Visit ID: ---
Date & Time: 17-May-2017 15:22:12
Duration: 23:57:57

Machine Data

Device: SAVVY 1.0.2 hw=1.23MobECG 1.7.2
Device ID: ---
Software: ---
Manufacturer : ---

Treatment

Referred by:

Analysis Data

	Min	Max	Avr
Total QRS: 75895			
Analyzed Data: 18:30:42, Noise: 05:18:06 (22.1%)	RR (ms) 480 (10:37:12)	1480 (16:56:47)	884
	HR (bpm) 50 (07:03:12)	116 (17:41:19)	69
Atrial Fibrillation: -			
VPB			
Total Number: 3 (0.00%)	SVPB		
Isolated V: 3	Total Number: 84 (0.11%)		
Ventricular Couplets: 0	Isolated S: 42		
Ventricular Run: 0	Supraventricular Couplets: 9		
- Longest : -	Supraventricular Run: 3		
- Fastest : -	- Longest at 07:04:35, 9 beats, HR: 82 bpm		
V Bigeminy: 0	- Fastest at 04:19:55, 6 beats, HR: 85 bpm		
V Trigeminy: 0	SV Bigeminy: 0		
Ventricular Tachycardia: 0	SV Trigeminy: 0		
	Supraventricular Tachycardia: 0		
Bradycardia: 0			
Pauses: 0			
HRV			
PNN50: 4.62 %			
SDNN: 137.98 ms			
RMSSD: 30.95 ms			

Analysis Settings

Analysis Software: CER-S v4.1.0SPRINT1_BETA2 - Beat Detection (ABILE-Pancrazio v1.5.0) - Rhythm Analysis (ABILE-Pancrazio v1.5.0)

BEAT DETECTION

- Leads used for detection: Unknown1 - Noise sensitivity level: High

RHYTHM ANALYSIS

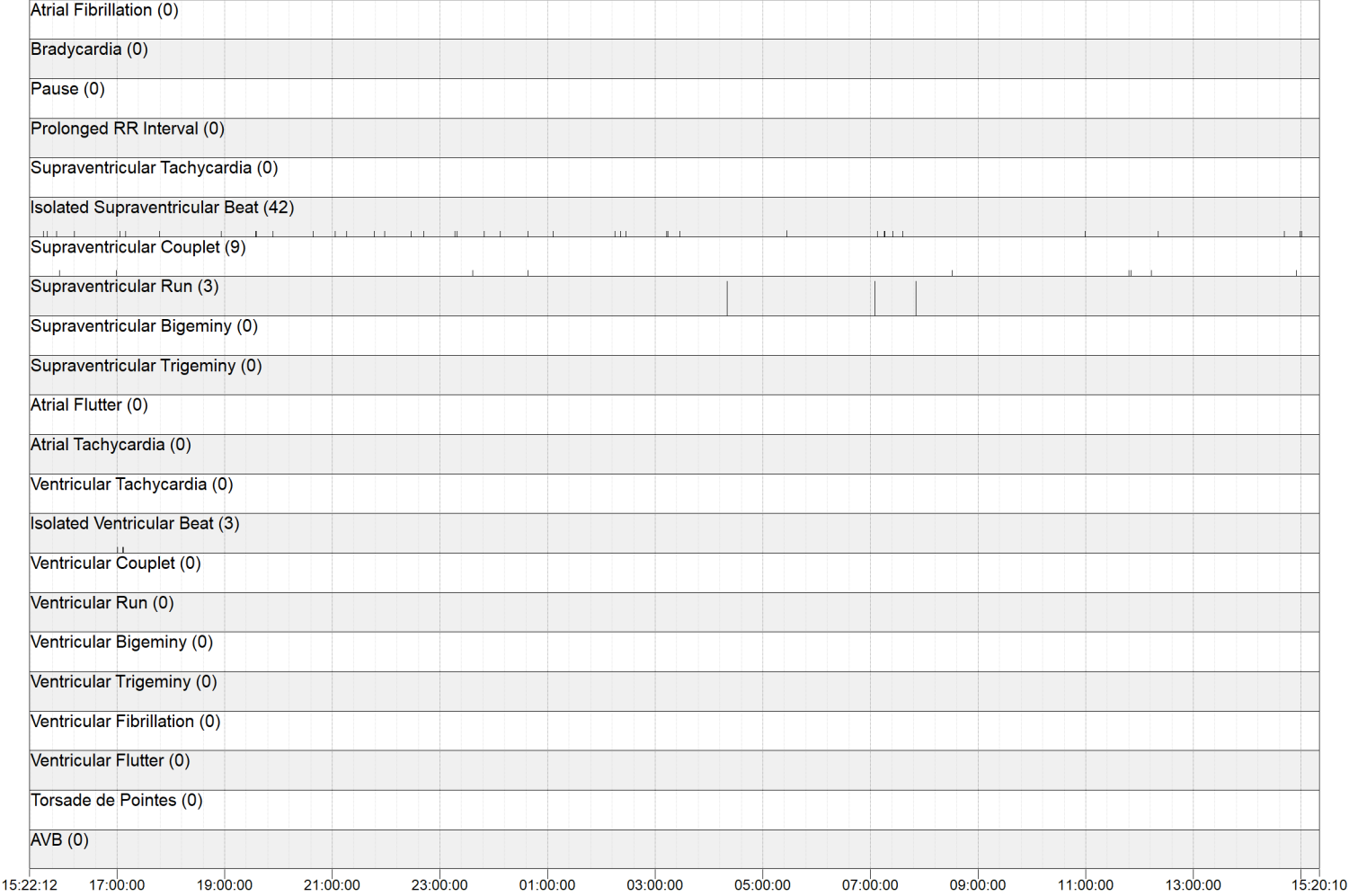
- Prematurity index: 75% - Average RR Window size: 8
- Prolonged RR Interval Threshold: 200% - Pause Threshold: 2.5 s
- Bradycardia Threshold: 45 bpm, Min. Len.: 10.0 s - Supravent. Tachycardia Thresh.: 150 bpm, Min. Len.: 5.0 s
- Vent. Tachycardia Thresh.: 150 bpm, Min. Len.: 5.0 s

Review

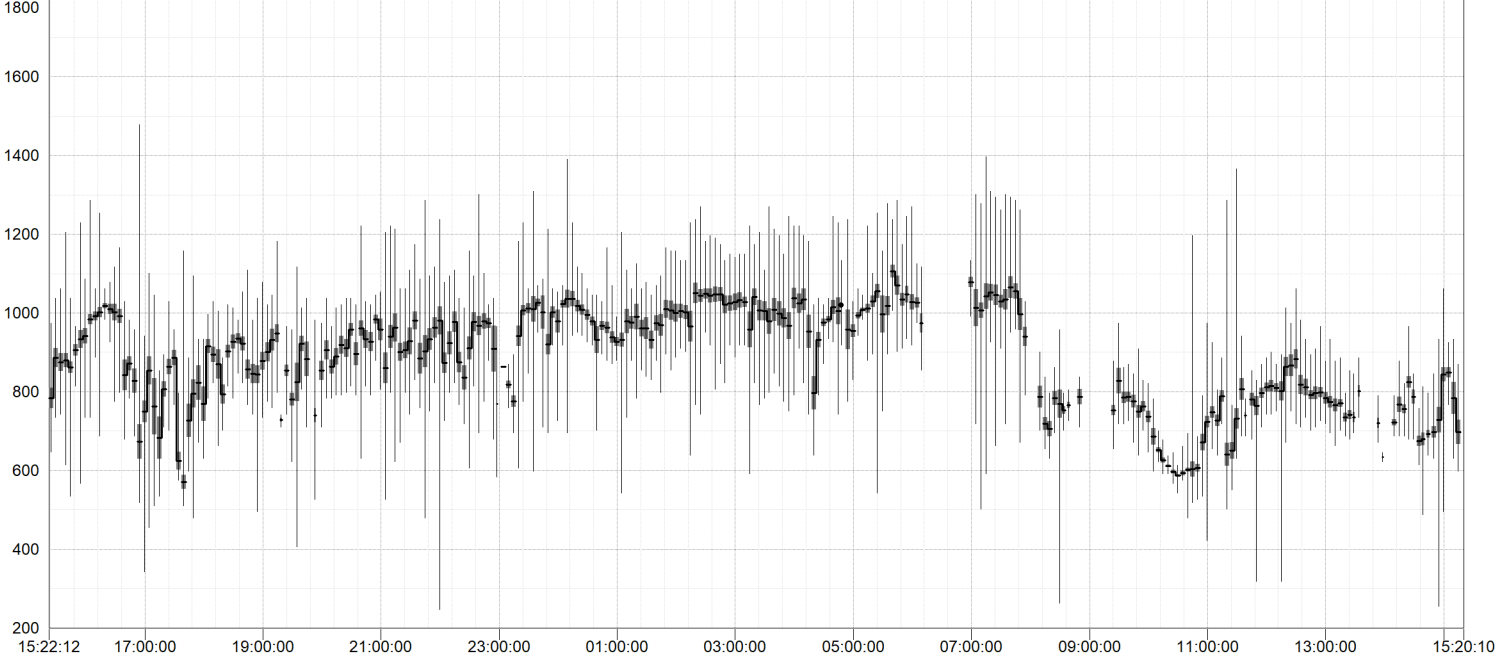
Date of Analysis _____

Reviewer: _____

Time-Rhythm Plot



RR Average with extrema and Standard Deviation. (RR window = 5 minute(s))



Continuous ECG Report

Beats and Rhythm Table - Part 1 of 3

Time	Analyzed Time	RR Min	RR Max	RR Average	RR StDev	HR Min	HR Max	HR Average	HR StDev	Brady	Pauses	Prolonged RR Intervals	SVPB Isolated	SV Couplet	SV Run	SV Bg	SV Tg
15:22:12 - 15:59:59	00:37:21 (98.9%)	648	1232	880	68.05	61	88	68	8.99	-	-	-	3	1	-	-	-
16:00:00 - 16:59:59	00:56:09 (93.6%)	520	1480	921	117.40	55	99	66	9.90	-	-	-	1	1	-	-	-
17:00:00 - 17:59:59	00:46:04 (76.8%)	512	1160	751	129.34	63	116	82	15.70	-	-	-	3	-	-	-	-
18:00:00 - 18:59:59	00:57:56 (96.6%)	664	1112	880	74.70	59	89	68	9.57	-	-	-	1	-	-	-	-
19:00:00 - 19:59:59	00:41:09 (68.6%)	624	1184	871	85.01	58	84	69	9.82	-	-	-	3	-	-	-	-
20:00:00 - 20:59:59	00:59:29 (99.2%)	784	1224	924	63.73	58	75	65	5.67	-	-	-	1	-	-	-	-
21:00:00 - 21:59:59	00:55:53 (93.1%)	672	1288	928	84.66	56	83	65	11.92	-	-	-	4	-	-	-	-
22:00:00 - 22:59:59	00:53:40 (89.4%)	584	1304	929	89.15	57	87	65	11.45	-	-	-	2	-	-	-	-
23:00:00 - 23:59:59	00:41:17 (68.8%)	696	1312	975	83.17	56	84	62	9.66	-	-	-	3	1	-	-	-
00:00:00 - 00:59:59	00:59:25 (99.0%)	728	1392	987	64.99	54	82	61	11.14	-	-	-	3	1	-	-	-
01:00:00 - 01:59:59	00:59:54 (99.9%)	736	1208	972	69.24	54	76	62	10.84	-	-	-	1	-	-	-	-
02:00:00 - 02:59:59	00:59:43 (99.5%)	760	1272	1027	55.35	54	78	59	8.29	-	-	-	3	-	-	-	-
03:00:00 - 03:59:59	00:59:47 (99.7%)	744	1272	1004	66.28	54	80	60	10.81	-	-	-	3	-	-	-	-
04:00:00 - 04:59:59	00:48:19 (80.5%)	640	1248	977	84.65	54	93	62	9.97	-	-	-	-	-	1	-	-
05:00:00 - 05:59:59	00:56:32 (94.2%)	752	1288	1031	68.48	51	78	58	6.69	-	-	-	1	-	-	-	-
06:00:00 - 06:59:59	00:07:44 (12.9%)	856	1136	1016	49.68	55	67	59	6.11	-	-	-	-	-	-	-	-
07:00:00 - 07:59:59	00:54:21 (90.6%)	792	1400	1035	69.29	50	86	58	6.45	-	-	-	5	-	2	-	-
08:00:00 - 08:59:59	00:12:29 (20.8%)	632	960	756	59.61	69	95	80	11.82	-	-	-	-	1	-	-	-
09:00:00 - 09:59:59	00:19:58 (33.3%)	640	976	778	52.85	65	90	77	6.46	-	-	-	-	-	-	-	-
10:00:00 - 10:59:59	00:59:41 (99.5%)	480	1200	629	57.67	75	104	96	14.69	-	-	-	1	-	-	-	-
11:00:00 - 11:59:59	00:46:19 (77.2%)	504	1368	737	69.45	66	102	82	11.45	-	-	-	-	2	-	-	-
12:00:00 - 12:59:59	00:46:13 (77.0%)	704	1064	823	51.23	62	83	73	12.51	-	-	-	1	1	-	-	-
13:00:00 - 13:59:59	00:21:24 (35.7%)	624	936	762	48.49	71	95	79	11.08	-	-	-	-	-	-	-	-
14:00:00 - 14:59:59	00:31:40 (52.8%)	576	1064	749	66.04	68	97	80	8.96	-	-	-	2	1	-	-	-
15:00:00 - 15:20:09	00:18:01 (89.4%)	600	1032	785	94.16	68	98	77	10.45	-	-	-	1	-	-	-	-
All Days: 08:00:00 - 20:00:00	08:14:32 (68.9%)	480	1480	788	119.97	55	116	78	16.75	-	-	-	16	7	-	-	-
All Nights: 23:00:00 - 06:00:00	06:25:01 (91.7%)	640	1392	997	79.56	51	93	60	7.48	-	-	-	14	2	1	-	-
Entire Recording	18:30:42 (77.2%)	480	1480	884	139.43	50	116	69	14.87	-	-	-	42	9	3	-	-

Continuous ECG Report

Beats and Rhythm Table - Part 2 of 3

Time	Analyzed Time	SV Tachy	ATachy	AFib	AFlutter	V Isolated	V Couplet	V Run	V Bg	V Tg	V Tachy	VFib	VFlutter	Torsade de Pointes	AVB	N Beats	V Beats
15:22:12 - 15:59:59	00:37:21 (98.9%)	-	-	-	-	-	-	-	-	-	-	-	-	-	-	2549	-
16:00:00 - 16:59:59	00:56:09 (93.6%)	-	-	-	-	-	-	-	-	-	-	-	-	-	-	3677	-
17:00:00 - 17:59:59	00:46:04 (76.8%)	-	-	-	-	3	-	-	-	-	-	-	-	-	-	3724	3
18:00:00 - 18:59:59	00:57:56 (96.6%)	-	-	-	-	-	-	-	-	-	-	-	-	-	-	3968	-
19:00:00 - 19:59:59	00:41:09 (68.6%)	-	-	-	-	-	-	-	-	-	-	-	-	-	-	2849	-
20:00:00 - 20:59:59	00:59:29 (99.2%)	-	-	-	-	-	-	-	-	-	-	-	-	-	-	3865	-
21:00:00 - 21:59:59	00:55:53 (93.1%)	-	-	-	-	-	-	-	-	-	-	-	-	-	-	3624	-
22:00:00 - 22:59:59	00:53:40 (89.4%)	-	-	-	-	-	-	-	-	-	-	-	-	-	-	3486	-
23:00:00 - 23:59:59	00:41:17 (68.8%)	-	-	-	-	-	-	-	-	-	-	-	-	-	-	2552	-
00:00:00 - 00:59:59	00:59:25 (99.0%)	-	-	-	-	-	-	-	-	-	-	-	-	-	-	3611	-
01:00:00 - 01:59:59	00:59:54 (99.9%)	-	-	-	-	-	-	-	-	-	-	-	-	-	-	3699	-
02:00:00 - 02:59:59	00:59:43 (99.5%)	-	-	-	-	-	-	-	-	-	-	-	-	-	-	3490	-
03:00:00 - 03:59:59	00:59:47 (99.7%)	-	-	-	-	-	-	-	-	-	-	-	-	-	-	3572	-
04:00:00 - 04:59:59	00:48:19 (80.5%)	-	-	-	-	-	-	-	-	-	-	-	-	-	-	2975	-
05:00:00 - 05:59:59	00:56:32 (94.2%)	-	-	-	-	-	-	-	-	-	-	-	-	-	-	3303	-
06:00:00 - 06:59:59	00:07:44 (12.9%)	-	-	-	-	-	-	-	-	-	-	-	-	-	-	477	-
07:00:00 - 07:59:59	00:54:21 (90.6%)	-	-	-	-	-	-	-	-	-	-	-	-	-	-	3145	-
08:00:00 - 08:59:59	00:12:29 (20.8%)	-	-	-	-	-	-	-	-	-	-	-	-	-	-	1027	-
09:00:00 - 09:59:59	00:19:58 (33.3%)	-	-	-	-	-	-	-	-	-	-	-	-	-	-	1584	-
10:00:00 - 10:59:59	00:59:41 (99.5%)	-	-	-	-	-	-	-	-	-	-	-	-	-	-	5697	-
11:00:00 - 11:59:59	00:46:19 (77.2%)	-	-	-	-	-	-	-	-	-	-	-	-	-	-	3820	-
12:00:00 - 12:59:59	00:46:13 (77.0%)	-	-	-	-	-	-	-	-	-	-	-	-	-	-	3426	-
13:00:00 - 13:59:59	00:21:24 (35.7%)	-	-	-	-	-	-	-	-	-	-	-	-	-	-	1730	-
14:00:00 - 14:59:59	00:31:40 (52.8%)	-	-	-	-	-	-	-	-	-	-	-	-	-	-	2575	-
15:00:00 - 15:20:09	00:18:01 (89.4%)	-	-	-	-	-	-	-	-	-	-	-	-	-	-	1383	-
All Days: 08:00:00 - 20:00:00	08:14:32 (68.9%)	-	-	-	-	3	-	-	-	-	-	-	-	-	-	38009	3
All Nights: 23:00:00 - 06:00:00	06:25:01 (91.7%)	-	-	-	-	-	-	-	-	-	-	-	-	-	-	23202	-
Entire Recording	18:30:42 (77.2%)	-	-	-	-	3	-	-	-	-	-	-	-	-	-	75808	3

Beats and Rhythm Table - Part 3 of 3

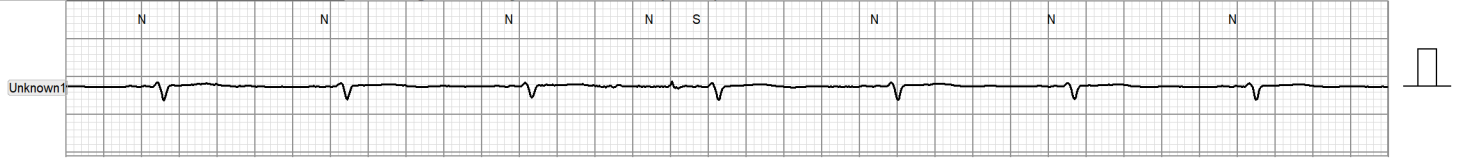
Time	Analyzed Time	S Beats
15:22:12 - 15:59:59	00:37:21 (98.9%)	5
16:00:00 - 16:59:59	00:56:09 (93.6%)	3
17:00:00 - 17:59:59	00:46:04 (76.8%)	3
18:00:00 - 18:59:59	00:57:56 (96.6%)	1
19:00:00 - 19:59:59	00:41:09 (68.6%)	3
20:00:00 - 20:59:59	00:59:29 (99.2%)	1
21:00:00 - 21:59:59	00:55:53 (93.1%)	4
22:00:00 - 22:59:59	00:53:40 (89.4%)	2
23:00:00 - 23:59:59	00:41:17 (68.8%)	5
00:00:00 - 00:59:59	00:59:25 (99.0%)	5
01:00:00 - 01:59:59	00:59:54 (99.9%)	1
02:00:00 - 02:59:59	00:59:43 (99.5%)	3
03:00:00 - 03:59:59	00:59:47 (99.7%)	3
04:00:00 - 04:59:59	00:48:19 (80.5%)	6
05:00:00 - 05:59:59	00:56:32 (94.2%)	1
06:00:00 - 06:59:59	00:07:44 (12.9%)	-
07:00:00 - 07:59:59	00:54:21 (90.6%)	23
08:00:00 - 08:59:59	00:12:29 (20.8%)	2
09:00:00 - 09:59:59	00:19:58 (33.3%)	-
10:00:00 - 10:59:59	00:59:41 (99.5%)	1
11:00:00 - 11:59:59	00:46:19 (77.2%)	4
12:00:00 - 12:59:59	00:46:13 (77.0%)	3
13:00:00 - 13:59:59	00:21:24 (35.7%)	-
14:00:00 - 14:59:59	00:31:40 (52.8%)	4
15:00:00 - 15:20:09	00:18:01 (89.4%)	1
All Days: 08:00:00 - 20:00:00	08:14:32 (68.9%)	30
All Nights: 23:00:00 - 06:00:00	06:25:01 (91.7%)	24
Entire Recording	18:30:42 (77.2%)	84

Continuous ECG Report

Automatic Strips

Isolated Supraventricular Beat (Shortest): starting at 17-May-2017 21:58:26 (7 sec)

25 mm/s 5 mm/mV



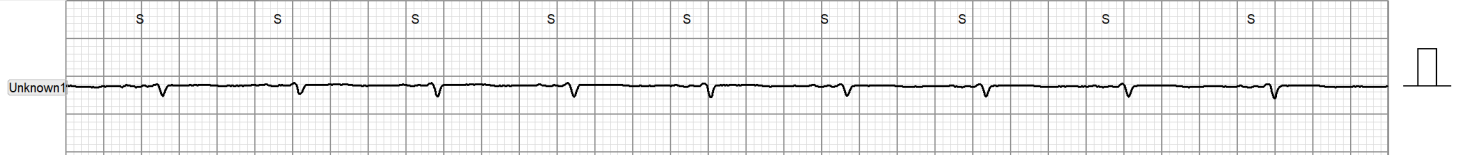
Supraventricular Couplet (Shortest): starting at 18-May-2017 08:30:25 (7 sec)

25 mm/s 5 mm/mV



Supraventricular Run (Longest): starting at 18-May-2017 07:04:35 (7 sec)

25 mm/s 5 mm/mV



Isolated Ventricular Beat (Shortest): starting at 17-May-2017 17:00:20 (7 sec)

25 mm/s 5 mm/mV

